



PSI  
3210 E Tropicana  
Las Vegas, NV 89121  
[www.psiexams.com](http://www.psiexams.com)

Before paying for  
your examination registration,  
be sure you understand  
the contents of this bulletin.  
Please retain and use it as a reference  
when contacting PSI.

## STATE OF NEW MEXICO

### HOISTING EXAMINATIONS CANDIDATE INFORMATION BULLETIN

Examinations by PSI .....	1	Security Procedures.....	3
Examination Scheduling Procedures .....	1	Taking the Examination by Computer.....	3
Internet Scheduling.....	1	Identification .....	3
Fax Registration.....	1	Tutorial.....	3
Standard Mail Registration.....	1	Examination Question Example .....	3
Telephone Scheduling .....	1	Examination Review .....	4
Canceling an Examination .....	1	Scope Reporting.....	4
Missed Appointment or Late Cancellation.....	2	Duplicate Score Reports .....	4
Special Examination Arrangements.....	2	Tips for Preparing for your License Examination .....	4
Emergency Examination Center Closing .....	2	Examination Content Outlines .....	4
Examination Site Location.....	2	Examination Registration Form .....	7
Reporting to the Examination Site .....	3	Special Arrangement Request Form .....	End of Bulletin
Required Identification .....	3		

Please refer to our website to check for the most updated information at [www.psiexams.com](http://www.psiexams.com)

## EXAMINATIONS BY PSI

This Candidate Information Bulletin provides you with information about the Hoisting examination process in the State of New Mexico.

The Construction Industries Division of The New Mexico Regulation and Licensing Department (CID) has contracted with PSI to conduct its examination approval process and examination testing. PSI provides examinations through a network of computer examination centers in New Mexico and in many areas throughout the United States. PSI works closely with the State to be certain that examinations meet local as well as national requirements in basic principles and examination development standards.

## EXAMINATION SCHEDULING PROCEDURES

The Examination Registration Form is found at the end of this Candidate Information Bulletin. You must pay at the time you register. Be sure the registration form is complete, accurate, signed, and that you include the correct fee. The registration form is valid for 1 examination.

Once you have passed the examination, your passing score is valid for one year. If you fail, you must wait 7 days before you can test again.

Fees are listed on the registration form found at the end of this Candidate Information Bulletin.

### INTERNET REGISTRATION

For the fastest and most convenient test scheduling process, PSI recommends that candidates register for their examinations using the Internet. To register over the Internet, you will need a valid credit card (Visa, MasterCard, American Express or Discover). Candidates register online by accessing PSI's registration website at [www.psiexams.com](http://www.psiexams.com). Internet registration is available 24 hours a day. To register by Internet, complete the steps below:

1. Complete the registration form on line and send it to PSI via the Internet.
2. Upon completion of the online registration form, you will be given the available examination dates and locations for scheduling your examination. Select your desired testing date.

### FAX REGISTRATION

For fax registration, you will need a valid credit card (Visa, MasterCard, American Express or Discover).

1. Complete the Examination Registration Form, including your credit card number and expiration date.
2. Fax the completed form to PSI (702) 932-2666. Fax registrations are accepted 24 hours a day.

3. Please allow 4 business days to process your registration. After 4 business days, you may call PSI to schedule the examination at (800) 733-9267.

### STANDARD MAIL REGISTRATION

1. Complete the Examination Registration Form found in this Candidate Information Bulletin. **BE SURE TO READ ALL DIRECTIONS CAREFULLY BEFORE COMPLETING THE EXAMINATION REGISTRATION FORM. IMPROPERLY COMPLETED FORMS WILL BE RETURNED TO YOU UNPROCESSED.**
2. Return the completed original form to PSI with the appropriate examination fee. Payment of fees may be made by valid credit card (Visa, MasterCard, American Express or Discover), money order, company check or cashier's check. Money orders or checks must be made payable to PSI, with your social security number written on it to ensure that your fees are properly assigned. **CASH AND PERSONAL CHECKS ARE NOT ACCEPTED.**
3. Please allow 7 business days to process your registration before scheduling your examination at (800) 733-9267.

### TELEPHONE REGISTRATION

For telephone registration, you will need a valid credit card (Visa, MasterCard, American Express or Discover).

1. Complete the Examination Registration Form, including your credit card number and expiration date, so that you will be prepared with all of the information needed to register by telephone.
2. Call (800) 733-9267, 24 hours a day and register using the Automated Registration System. Otherwise, PSI registrars are available Monday through Friday between 5:30 am and 8:00 pm, and Saturday-Sunday between 7:00 am and 3:30 pm, Mountain Time, to receive the information listed on your Examination Registration Form and to schedule your appointment for the examination.

PSI will make every effort to schedule the examination site and time that is most convenient for you. If space is available in the examination site of your choice, you may schedule an examination 1 day prior to the examination date of your choice, up to 5:00 pm Mountain Time. Please be prepared to accept alternate examination appointment choices.

### CANCELING AN EXAMINATION APPOINTMENT

You may cancel and reschedule an examination appointment without forfeiting your fee if your *cancellation notice is received 2 days before the scheduled examination date*. For example, for a Monday appointment, the cancellation notice would need to be received on the previous Saturday. You may call PSI at (800) 733-9267. Please note that you may also use the automated system, using a touch-tone phone, 24 hours a day in order to cancel and reschedule your appointment.

**Note: A voicemail message is not an acceptable form of cancellation. Please use the PSI Website, automated telephone system, or call PSI and speak to a Customer Service Representative.**



## MISSED APPOINTMENT OR LATE CANCELLATION

Your registration will be invalid, you will not be able to take the examination as scheduled, and you will forfeit your examination fee, if you:

- Do not cancel your appointment at least 2 days before the scheduled examination date;
- Do not appear for your examination appointment;
- Arrive after examination start time; or
- Do not present proper identification when you arrive for the examination.

## SPECIAL EXAMINATION ARRANGEMENTS

All examination centers are equipped to provide access in accordance with the Americans with Disabilities Act (ADA) of 1990, and every reasonable accommodation will be made in meeting a candidate's needs. Applicants with disabilities or those who would otherwise have difficulty taking the examination must fill out the form at the end of this Candidate Information Bulletin and fax it to PSI (702) 932-2666.

## EXAMINATION SITE CLOSING FOR AN EMERGENCY

In the event that severe weather or another emergency forces the closure of an examination site on a scheduled examination date, your examination will be rescheduled. PSI personnel will attempt to contact you in this situation. However, you may check the status of your examination schedule by calling (800) 733-9267. Every effort will be made to reschedule your examination at a convenient time as soon as possible.

## **EXAMINATION SITE LOCATION**

The New Mexico examinations are administered at the PSI examination centers in New Mexico as listed below:

### **Albuquerque**

2301 Yale Blvd, SE  
Building C, Suite 4

Albuquerque, NM 87106

*From Interstate 25, take the Gibson Blvd exit and travel East on Gibson Blvd until you reach Yale Blvd Southeast. Turn right on Yale Blvd S.E. (heading South), just past Renard Place and then turn right into the Commerce Center. The site is across the street from the Waffle House and Comfort Inn.*

### **Farmington**

1307 E. 20th St.

Farmington, NM 87401

*From E Main St, turn right on Sullivan and turn left on 20<sup>th</sup> St.*

### **Las Cruces**

1001 N. Solano, Suite # D

Las Cruces, NM 88001

*Take Highway 70 West to Solano. Turn South on Solano and go one block past Spruce to Pinon. The test center is on the Northwest corner of Solano and Pinon.*

### **Roswell**

105 E. Fifth St.

Roswell, NM 88201

*From US-285 S / US-70 W, turn LEFT onto E 5TH ST.*

### **Santa Fe**

4001 Office Court Drive, Suite 301

Santa Fe, NM 87507

*From Albuquerque International Sunport Airport: Head East on Sunport Blvd SE. Merge onto I-25 N via the ramp to I-40/Downtown and Santa Fe. Take exit 278 and merge onto Cerrillos Road/NM-14 N.*

*Approximately 2.5 miles north on Cerrillos Road, turn right on Wagon Road. Turn right on Office Court Drive into the office park.*

*From Espanola, NM and North Cities: Head Southeast on East Paseo De Onate/US-285S/US-84S (toward Calle Espinosa). Continue on Sandia Drive. Slight right at South Riverside Drive/US-285S/US-84S. Turn right on Cerrillos Road. Approximately 5 miles on Cerrillos Road, turn left on Wagon Road. Turn right on Office Court Drive into the office park.*

### **COLORADO EXAMINATION SITE**

*The following site will offer the New Mexico examinations.*

### **Durango**

799 East 3rd Street, Suite 3

Durango, CO 81301

*From Hwy 550: Turn East on College Drive. Go straight then turn right on East 8th Avenue. Follow until East 3rd Street. PSI Testing Site is on the right in Suite 3.*

### **TEXAS EXAMINATION SITES**

*The following sites will offer the New Mexico examinations.*

### **Amarillo**

4312 Teckla, Suite 500

Amarillo, TX 79109

*Exit off I-40 to Western and go South one street passed the 7th traffic light to Ridgecrest and turn right. Stay on Ridgecrest until you come to the red brick office complex on the left side corner of Ridgecrest and Teckla. 4312 is the 3<sup>rd</sup> building facing Teckla. Ste 500 is the end suite on the North side of the building.*

*From Canyon, take Bell St exit and go North to traffic light at 45<sup>th</sup> St and turn right. Turn left at the 2<sup>nd</sup> traffic light to Teckla.*

### **El Paso**

The Atrium

1155 Westmoreland, Suite 110

El Paso, TX 79925

*From I-10 W, take the Airways exit North. Turn right at the first light (Viscount). Turn right on Westmoreland Dr.*

### **Lubbock**

The Center

4413 82nd St., Suite 210

Lubbock, TX 79424

*From S Loop 289, take the Quaker Ave exit and go South. Turn right on 82<sup>nd</sup> St.*

### **Midland**

Westwood Village Shopping Center

4200 West Illinois Avenue, Suite 200

Midland, TX 79703

*From I-20, take Midkiff Road exit. Go North on Midkiff Road. Take a left on Illinois Ave. Go .8 miles and turn right into Chinese Kitchen's parking lot at 4200 W Illinois. Suite is at the end of the left Strip.*

*From Business 20 (Old Hwy 80) going West, follow Front Street until Wall St Traffic light. Go 2 blocks and turn right on Midkiff. Turn left on Illinois. Go .8 miles and turn right into Chinese Kitchen's parking lot at 4200 W Illinois. Suite is at the end of the left Strip.*



From North Hwy 349, Look for Loop 250 West (just before overpass). Turn right at Loop and go 2 miles to Exit Midkiff. Turn left at traffic light. Turn right at Illinois traffic signal. Turn right onto Chinese Kitchen's parking Lot at 4200 W Illinois. Suite is at the end of the left Strip.

Additionally, PSI has examination centers in many other regions across the United States. You may take this examination at any of these locations by filling out the Special Arrangement Request Form found at the end of this Candidate Information Bulletin.

## REPORTING TO THE EXAMINATION SITE

On the day of the examination, you should arrive at least 30 minutes before your appointment. This extra time is for sign-in, identification, and familiarizing you with the examination process. *If you arrive late, you may not be admitted to the examination site and you will forfeit your examination registration fee.*

### REQUIRED IDENTIFICATION AT EXAMINATION SITE

*You must provide 2 forms of identification.* One must be a VALID form of government issued identification (driver's license, state ID, passport, military ID), which bears your signature and has your photograph or a complete physical description. The second ID must have your signature and preprinted legal name. All identification provided must match the name on the Eligibility Letter.

If you cannot provide the required identification, you must call (800) 733-9267 at least 3 weeks prior to your scheduled appointment to arrange a way to meet this security requirement. *Failure to provide all of the required identification at the time of the examination without notifying PSI is considered a missed appointment, and you will not be able to take the examination.*

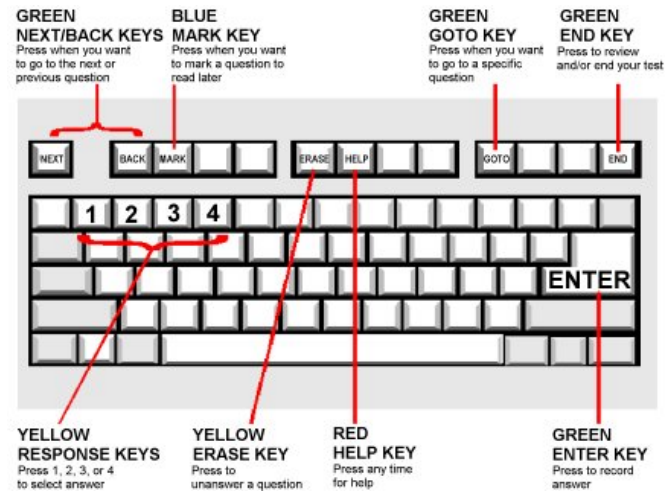
### SECURITY PROCEDURES

The following security procedures will apply during the examination:

- NO conversing or any other form of communication among candidates is permitted once you enter the examination area.
- Cell phones, pagers, recording devices, and children are not allowed in the examination center. **NO personal items are to enter the testing center.** PSI will not be responsible for any personal items and suggests that you leave them locked in the trunk of your car.
- Only non-programmable calculators that are silent, battery-operated, do not have paper tape printing capabilities, and do not have a keyboard containing the alphabet will be allowed in the examination site.
- No smoking, eating, or drinking will be allowed at the examination site.
- You may not exit the building during the examination.
- Copying or communicating examination content is a violation of PSI security policy and the State Law. Either one may result in the disqualification of examination results and may lead to legal action.

## TAKING THE EXAMINATION BY COMPUTER

Taking the PSI written examination by computer is simple. You do not need any computer experience or typing skills. You will use fewer keys than you use on a touch-tone telephone. All response keys are colored and have prominent characters. An illustration of the special keyboard is shown here. You may also use a mouse.



### IDENTIFICATION SCREEN

You will be directed to a semiprivate testing station to take the examination. When you are seated at the testing station, you will be prompted to confirm your name, identification number, and the examination for which you are registered.

### TUTORIAL

Before you start your examination, an introductory tutorial to the computer and keyboard is provided on the computer screen. The time you spend on this tutorial, up to 15 minutes, DOES NOT count as part of your examination time. Sample questions are included following the tutorial so that you may practice using the keys, answering questions, and reviewing your answers.

One question appears on the screen at a time. During the examination, minutes remaining will be displayed at the top of the screen and updated as you record your answers.

### EXAMINATION QUESTION EXAMPLE

During the examination, you should press 1, 2, 3, or 4 to select your answer or press "MARK" to mark it for later review. You should then press "ENTER" to record your answer and move on to the next question. A sample question display follows:

Mark Comments Goto ? Help End

Question: 3 of 40 Answered: 2 Unanswered: 1 Marked: 0 View: All Time Left(Min): 359

3. What do the stars on the United States of America's flag represent?

(Choose from the following options)

☐ 1. Presidents

☐ 2. Colonies

☐ 3. States

☐ 4. Wars

<< Back Next >>

**IMPORTANT:** After you have entered your responses, you will later be able to return to any question(s) and change your response, provided the examination time has not run out.

### EXPERIMENTAL QUESTIONS

In addition to the number of questions per examination, a small number of five to ten "experimental" questions may be administered to candidates during the examinations. These questions will not be scored and the time taken to answer them will not count against examination time. The administration of such non-scored experimental questions is an essential step in developing future licensing examinations.

### EXAMINATION REVIEW

PSI, in cooperation with the New Mexico Regulation and Licensing Department, will be consistently evaluating the examinations being administered to ensure that the examinations accurately measure competency in the required knowledge areas. Comments may be entered on the computer keyboard during the examination. Your comments regarding the questions and the examinations are welcomed. Comments will be analyzed by PSI examination development staff. While PSI does not respond to individuals regarding these comments, all substantive comments are reviewed. If a discrepancy is found during the comment review, PSI and the Department may re-evaluate candidates' results and adjust them accordingly. **This is the only review of examination materials available to applicants.**

## SCORE REPORTING

Your score will be given to you immediately following completion of the examination. The following summary describes the score reporting process:

- **On screen** - your score will appear immediately on the computer screen. This will happen automatically at the end of the time allowed for the examination;
  - If you **pass**, you will immediately receive a successful notification.
  - If you **do not pass**, you will receive a diagnostic report indicating your strengths and weaknesses by examination type with the score report.
- **On paper** - an unofficial score report will be printed at the examination site.

### DUPLICATE SCORE REPORTS

You may request a duplicate score report up to one year after your examination by emailing [scorereport@psionline.com](mailto:scorereport@psionline.com) or by calling 800-733-9267.

## TIPS FOR PREPARING FOR YOUR LICENSE EXAMINATION

The following suggestions will help you prepare for your examination.

- Planned preparation increases your likelihood of passing.
- Start with a current copy of this Candidate Information Bulletin and use the examination content outline as the basis of your study.
- Read study materials that cover all the topics in the content outline.
- Take notes on what you study. Putting information in writing helps you commit it to memory and it is also an excellent business practice. Discuss new terms or concepts as frequently as you can with colleagues. This will test your understanding and reinforce ideas.
- Your studies will be most effective if you study frequently, for periods of about 45 to 60 minutes. Concentration tends to wander when you study for longer periods of time.

## EXAMINATION REFERENCE MATERIAL AND CONTENT OUTLINE

If a test question answer could differ because of conflicting information in test reference sources, a legal requirement such as code, law, or regulation overrides any other reference. If two legal requirements appear to conflict, the state-specific code, law, or regulation overrides the national one. Information from sources on the test reference list override information from other sources or persons.

### Hoisting Operator Class I

# of Questions	% Required to Pass	Time Allowed
60	75% (45 points)	120 Minutes

### CONTENT OUTLINE

Subject Area	# of Items
Signals	12
Conventional Crane	6
Operating Practices	12
Rigging and Maintenance	9
Inspection and Testing	8
Hydraulic Cranes	6
Equipment Characteristics	4
Definitions	3



## REFERENCE LIST

The reference materials listed below were used to prepare the questions for this examination. The examination may also contain questions based on trade knowledge or general industry practices. **Except for Code books**, you can base your answers on later editions of references as they become available. For Code questions, the examinations will be based **only** on the edition of the Code book that is listed.

Candidates may use a silent, non-printing, non-programmable calculator in the examination center.

This examination is OPEN BOOK.

*The following reference materials are allowed in the examination center:*

- ASME B30.4 - Portal, Tower, and Pedestal Cranes, 2010, American Society of Mechanical Engineers, (800) 843-2763, [www.asme.org](http://www.asme.org), ISBN 0-7918-2820-4
- ASME B30.5 - Mobile and Locomotive Cranes, 2007, American Society of Mechanical Engineers, (800) 843-2763, [www.asme.org](http://www.asme.org), ISBN 0-7918-2820-4
- Mobile Crane Manual, Donald E. Dickie, 1982, Construction Safety Association of Ontario, (416) 674-2726, [www.csao.org](http://www.csao.org), ISBN 0-919465-09-9  
*Note: The Mobile Crane Manual is REQUIRED in order to answer some questions that may appear on the examination.*
- Handbook of Rigging for Construction and Industrial Operations, W.E. Rossnagel, 2009, McGraw-Hill, (800) 262-4729, [www.books.mcgraw-hill.com](http://www.books.mcgraw-hill.com)
- ASME B30.10 - Hooks, 2009, American Society of Mechanical Engineers (ASME), (800) 843-2763, [www.asme.org](http://www.asme.org)

Candidates are responsible for bringing their own references to the examination center. Reference materials must be bound, and may be highlighted, underlined, and/or indexed prior to the examination session. Reference materials containing any writing will not be allowed into the examination. References may not be written in during the examination session. Any candidate caught writing in the references during the examination will have the references confiscated and will be reported to the department. Furthermore, candidates are not permitted to bring in any additional papers (loose or attached) with their approved references. Any additional materials will be removed from the references and confiscated. References may be tabbed/indexed with permanent tabs only. Temporary tabs, such as Post-It notes, are not allowed and must be removed from the reference before the examination begins.

### Hoisting Operator Class II

# of Questions	% Required to Pass	Time Allowed
50	75% (38 points)	120 Minutes

## CONTENT OUTLINE

Subject Area	# of Items
Signals	10
Operating Practices	10
Rigging and Maintenance	10
Inspection and Testing	9
Hydraulic Cranes	5
Equipment Characteristics	4
Definitions	2

## REFERENCE LIST

The reference materials listed below were used to prepare the questions for this examination. The examination may also contain questions based on trade knowledge or general industry practices. **Except for Code books**, you can base your answers on later editions of references as they become available. For Code questions, the examinations will be based **only** on the edition of the Code book that is listed.

Candidates may use a silent, non-printing, non-programmable calculator in the examination center.

This examination is OPEN BOOK.

*The following reference materials are allowed in the examination center:*

- ASME B30.4 - Portal, Tower, and Pedestal Cranes, 2010, American Society of Mechanical Engineers, (800) 843-2763, [www.asme.org](http://www.asme.org), ISBN 0-7918-2820-4
- ASME B30.5 - Mobile and Locomotive Cranes, 2007, American Society of Mechanical Engineers, (800) 843-2763, [www.asme.org](http://www.asme.org), ISBN 0-7918-2820-4
- Mobile Crane Manual, Donald E. Dickie, 1982, Construction Safety Association of Ontario, (416) 674-2726, [www.csao.org](http://www.csao.org), ISBN 0-919465-09-9  
*Note: The Mobile Crane Manual is REQUIRED in order to answer some questions that may appear on the examination.*
- Handbook of Rigging for Construction and Industrial Operations, W.E. Rossnagel, 2009, McGraw-Hill, (800) 262-4729, [www.books.mcgraw-hill.com](http://www.books.mcgraw-hill.com)
- ASME B30.10 - Hooks, 2009, American Society of Mechanical Engineers (ASME), (800) 843-2763, [www.asme.org](http://www.asme.org)

Candidates are responsible for bringing their own references to the examination center. Reference materials must be bound, and may be highlighted, underlined, and/or indexed prior to the examination session. Reference materials containing any writing will not be allowed into the examination. References may not be written in during the examination session. Any candidate caught writing in the references during the examination will have the references confiscated and will be reported to the department. Furthermore, candidates are not permitted to bring in any additional papers (loose or attached) with their approved references. Any additional materials will be removed from the references and confiscated. References may be tabbed/indexed with permanent tabs only. Temporary tabs, such as Post-It notes, are not allowed and must be removed from the reference before the examination begins.

### Hoisting Operator Class III

# of Questions	% Required to Pass	Time Allowed
20	75% (15 points)	60 Minutes

#### CONTENT OUTLINE

Subject Area	# of Items
Laws and Rules	10
Hand signals	10

#### REFERENCE LIST

The reference materials listed below were used to prepare the questions for this examination. The examination may also contain questions based on trade knowledge or general industry practices. **Except for Code books**, you can base your answers on later editions of references as they become available. For Code questions, the examinations will be based **only** on the edition of the Code book that is listed.

Candidates may use a silent, non-printing, non-programmable calculator in the examination center.

This examination is OPEN BOOK.

*The following reference materials are allowed in the examination center:*

- *New Mexico Hoisting Operators Safety Act (NMSA Chapter 60, Article 15-1 to 15-13)*, 2006, Conway Greene Co., (216) 619-8091, [www.conwaygreene.com/NewMexico.htm](http://www.conwaygreene.com/NewMexico.htm)
- *New Mexico Hoisting Operators Code (NMAC 16.43.2)*, 2006, [www.nmcpr.state.nm.us/NMAC](http://www.nmcpr.state.nm.us/NMAC), (505) 476-4700
- *Mobile Crane Manual*, Donald E. Dickie, 1982, Construction Safety Association of Ontario, (416) 674-2726, [www.csao.org](http://www.csao.org), ISBN 0-919465-09-9  
*Note: The Mobile Crane Manual is REQUIRED in order to answer some questions that may appear on the examination.*
- *Handbook of Rigging for Construction and Industrial Operations*, W.E. Rossnagel, 2009, McGraw-Hill, (800) 262-4729, [www.books.mcgraw-hill.com](http://www.books.mcgraw-hill.com)
- *ASME B30.10 - Hooks*, 2009, American Society of Mechanical Engineers (ASME), (800) 843-2763, [www.asme.org](http://www.asme.org)

Candidates are responsible for bringing their own references to the examination center. Reference materials must be bound, and may be highlighted, underlined, and/or indexed prior to the examination session. Reference materials containing any writing will not be allowed into the examination. References may not be written in during the examination session. Any candidate caught writing in the references during the examination will have the references confiscated and will be reported to the department. Furthermore, candidates are not permitted to bring in any additional papers (loose or attached) with their approved references. Any additional materials will be removed from the references and confiscated. References may be tabbed/indexed with permanent tabs only. Temporary tabs, such as Post-It notes, are not allowed and must be removed from the reference before the examination begins.

### Hoisting Operator Tower Crane Endorsement

# of Questions	% Required to Pass	Time Allowed
20	75% (15 points)	60 Minutes

#### CONTENT OUTLINE

Subject Area	# of Items
Equipment Characteristics and Construction	2
Inspection and Testing	5
Rigging and Maintenance	4
Operating Practices	9

#### REFERENCE LIST

The reference materials listed below were used to prepare the questions for this examination. The examination may also contain questions based on trade knowledge or general industry practices. **Except for Code books**, you can base your answers on later editions of references as they become available. For Code questions, the examinations will be based **only** on the edition of the Code book that is listed.

Candidates may use a silent, non-printing, non-programmable calculator in the examination center.

This examination is OPEN BOOK.

*The following reference materials are allowed in the examination center:*

- *ASME B30.3 - Construction Tower Cranes*, 2004, American Society of Mechanical Engineers, (800) 843-2763, [www.asme.org](http://www.asme.org), ISBN 0-7918-2820-4
- *ASME B30.4 - Portal, Tower, and Pedestal Cranes*, 2010, American Society of Mechanical Engineers, (800) 843-2763, [www.asme.org](http://www.asme.org), ISBN 0-7918-2820-4
- *ASME B30.5 - Mobile and Locomotive Cranes*, 2007, American Society of Mechanical Engineers, (800) 843-2763, [www.asme.org](http://www.asme.org), ISBN 0-7918-2820-4
- *Handbook of Rigging for Construction and Industrial Operations*, W.E. Rossnagel, 2009, McGraw-Hill, (800) 262-4729, [www.books.mcgraw-hill.com](http://www.books.mcgraw-hill.com)
- *ASME B30.10 - Hooks*, 2009, American Society of Mechanical Engineers (ASME), (800) 843-2763, [www.asme.org](http://www.asme.org)

Candidates are responsible for bringing their own references to the examination center. Reference materials must be bound, and may be highlighted, underlined, and/or indexed prior to the examination session. Reference materials containing any writing will not be allowed into the examination. References may not be written in during the examination session. Any candidate caught writing in the references during the examination will have the references confiscated and will be reported to the department. Furthermore, candidates are not permitted to bring in any additional papers (loose or attached) with their approved references. Any additional materials will be removed from the references and confiscated. References may be tabbed/indexed with permanent tabs only. Temporary tabs, such as Post-It notes, are not allowed and must be removed from the reference before the examination begins.



*Read the Candidate Information Bulletin before filling out this registration form. You must provide all information requested and submit the appropriate fee. PLEASE TYPE OR PRINT LEGIBLY. Registration forms that are incomplete, illegible, or not accompanied by the proper fee will be returned unprocessed. Registration fees are not refundable or transferable.*

- |                          |  |          |
|--------------------------|--|----------|
| <input type="checkbox"/> | Hoisting Operator Class I  | \$68.88* |
| <input type="checkbox"/> | Hoisting Operator Class II   | \$68.88* |
| <input type="checkbox"/> | Hoisting Operator Class III  | \$68.88* |
| <input type="checkbox"/> | Hoisting Operator Tower Crane Endorsement  | \$68.88* |
|                          | <input type="checkbox"/> First-time <input type="checkbox"/> Retake   *Fee is the same for first-time or retake. |          |

Signature: \_\_\_\_\_ Date: \_\_\_\_\_

PSI may occasionally share your information with partners who have offers of interest to you. Please check this box if you do not wish PSI to share your information with these parties. Please note: PSI will never release your ID number or SSN number. ☐



## SPECIAL ARRANGEMENT REQUEST FORM OR OUT-OF-STATE TESTING REQUEST

All examination centers are equipped to provide access in accordance with the Americans with Disabilities Act (ADA) of 1990. Applicants with disabilities or those who would otherwise have difficulty taking the examination may request special examination arrangements.

Candidates who wish to request special arrangements because of a disability should fax this form and supporting documentation to PSI at (702) 932-2666.

### Requirements for special arrangement requests

You are required to submit documentation from the medical authority or learning institution that rendered a diagnosis. Verification must be submitted to PSI on the letterhead stationery of the authority or specialist and include the following:

- Description of the disability and limitations related to testing
- Recommended accommodation/modification
- Name, title and telephone number of the medical authority or specialist
- Original signature of the medical authority or specialist

Date \_\_\_\_\_ Social Security or ID#: \_\_\_\_\_

Legal Name: \_\_\_\_\_  
Last Name First Name

Address: \_\_\_\_\_  
Street City, State, Zip Code

Telephone: (\_\_\_\_\_) \_\_\_\_\_ - \_\_\_\_\_ (\_\_\_\_\_) \_\_\_\_\_ - \_\_\_\_\_  
Home Work

Email Address: \_\_\_\_\_

Check any special arrangements you require (requests must concur with documentation submitted):

- |  |  |
|--|--|
| <input type="checkbox"/> Reader (as accommodation for visual impairment)                                       | <input type="checkbox"/> Extended time<br>(Additional time requested: _____) |
| <input type="checkbox"/> Reader (as accommodation for learning disability)                                     | <input type="checkbox"/> Other _____   |
| <input type="checkbox"/> Large-print written examination   | _____  |
| <input type="checkbox"/> Out-of-State Testing Request (this request does not require additional documentation) |  |

Site requested: \_\_\_\_\_

- Complete and fax this form, along with supporting documentation, to (702) 932-2666.
- After 4 business days, please call (800) 367-1565, ext 6750 and leave a voice message.
- PSI Special Accommodations will call you back to schedule the examination within 48 hours.

**DO NOT SCHEDULE YOUR EXAMINATION UNTIL THIS DOCUMENTATION HAS BEEN  
RECEIVED AND PROCESSED BY PSI SPECIAL ACCOMMODATIONS.**

**PSI**

3210 E Tropicana  
Las Vegas, NV 89121